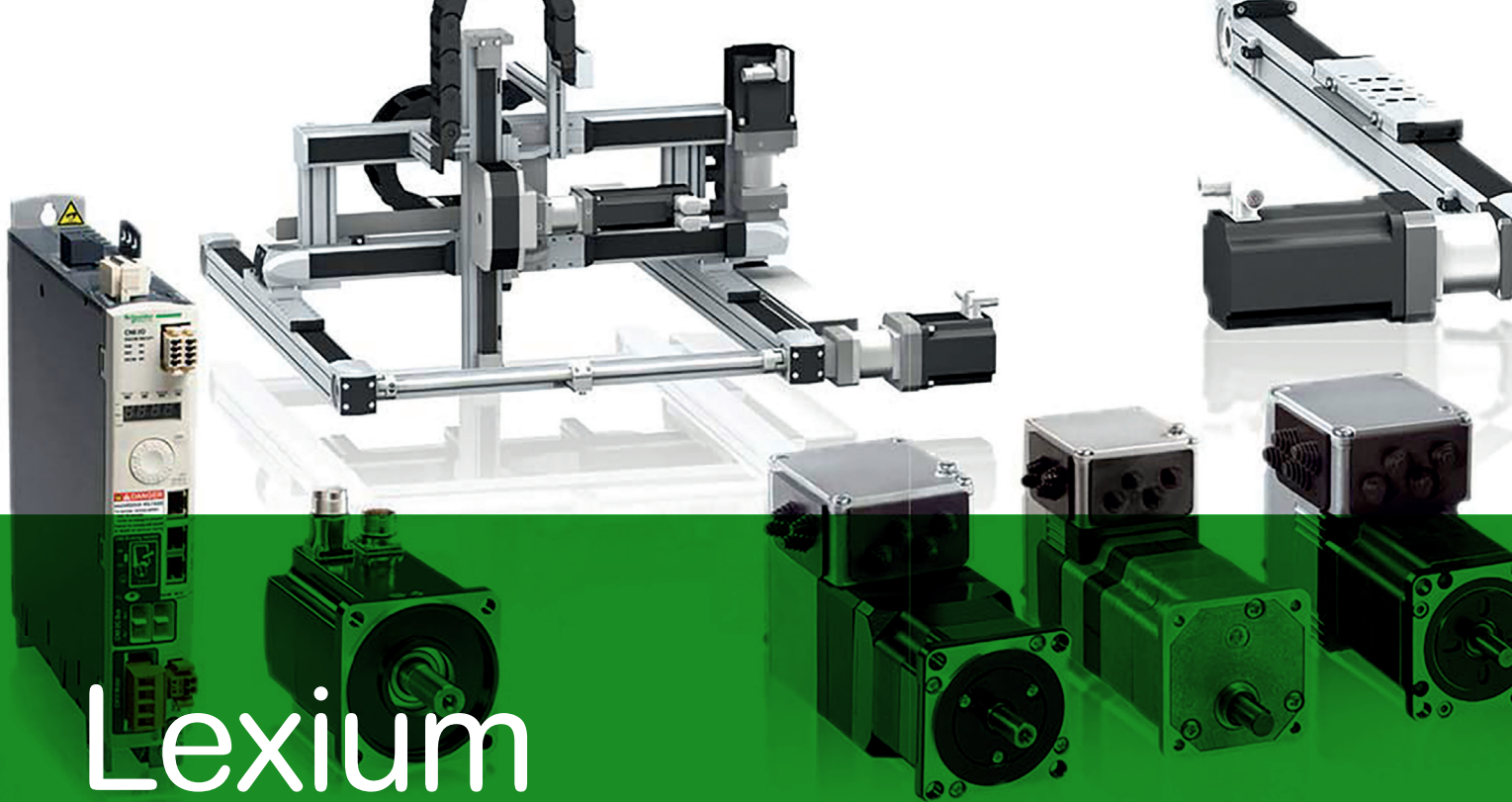


# Lexium™ MC12 multi carrier

The multi carrier transport system



## Discover [Lexium](#)

Advanced motion control and robotics

**Lexium** servo drives, motors, and robotics series are designed for a broad range of motion-centric machines. From single-axis to high-performance multi-axis machines, the **Lexium** range enables high-speed movements and precise positioning in packaging, material handling, material working, electronics, and food and beverage applications.

## Explore our offer

- [Lexium](#) Servo Drives and Motors
- [Lexium](#) Integrated Servo Drives
- [Lexium](#) Robotics
- [Lexium](#) Stepper Drives

Life Is On

**Schneider**  
Electric

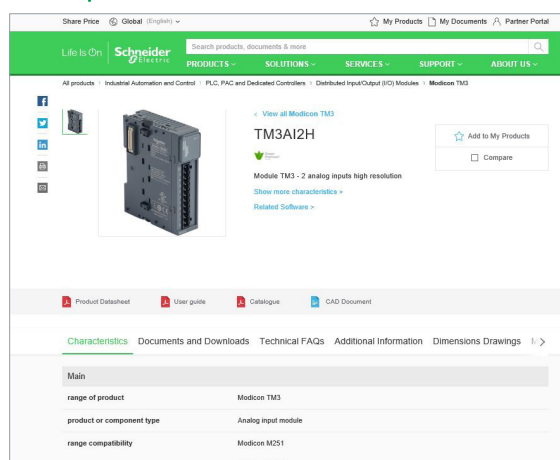
# Quick access to product information

## Get technical information about your product

**References**

**Modicon TM3**  
I/O expansion modules for Modicon controllers  
Analog I/O modules

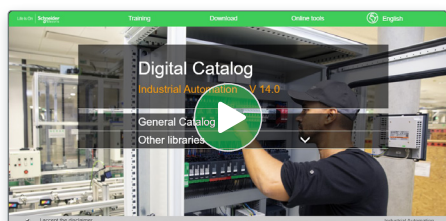
References	Number and type of channels	Input range	Output range	Resolution	Input/terminal block (I/O)	Reference	Weight (kg)
TM3AI2H	2 analog inputs	-10...+10 VDC	-10...+10 mA	10 bits or 10 bits or 12 bits	28-pin	TM3AI2H	0.130
		0...+10 VDC 0...20 mA, 4...20 mA	-	10 bits or 12 bits	28-pin	TM3AI2H	0.130
TM3AI2H	4 analog inputs	-10...+10 VDC	-10...+10 mA	10 bits or 10 bits or 12 bits	28-pin	TM3AI2H	0.130
		0...+10 VDC 0...20 mA, 4...20 mA	-	10 bits or 12 bits	28-pin	TM3AI2H	0.130
TM3AI2H	4 differential temperature inputs (I, I+, I-, I+)	Thermocouples (I, I+, I-, I+)	-	10 bits or 10 bits or 12 bits	28-pin	TM3AI2H	0.130
		RTDs (I, I+, I-, I+)	-	10 bits or 10 bits or 12 bits	28-pin	TM3AI2H	0.130
TM3AI2H	4 differential temperature inputs (I, I+, I-, I+)	Thermocouples (I, I+, I-, I+)	-	10 bits or 10 bits or 12 bits	28-pin	TM3AI2H	0.130
		RTDs (I, I+, I-, I+)	-	10 bits or 10 bits or 12 bits	28-pin	TM3AI2H	0.130
TM3AI2H	4 differential temperature inputs (I, I+, I-, I+)	Thermocouples (I, I+, I-, I+)	-	10 bits or 10 bits or 12 bits	28-pin	TM3AI2H	0.130
		RTDs (I, I+, I-, I+)	-	10 bits or 10 bits or 12 bits	28-pin	TM3AI2H	0.130
TM3AI2H	4 differential temperature inputs (I, I+, I-, I+)	Thermocouples (I, I+, I-, I+)	-	10 bits or 10 bits or 12 bits	28-pin	TM3AI2H	0.130
		RTDs (I, I+, I-, I+)	-	10 bits or 10 bits or 12 bits	28-pin	TM3AI2H	0.130
TM3AI2H	4 differential temperature inputs (I, I+, I-, I+)	Thermocouples (I, I+, I-, I+)	-	10 bits or 10 bits or 12 bits	28-pin	TM3AI2H	0.130
		RTDs (I, I+, I-, I+)	-	10 bits or 10 bits or 12 bits	28-pin	TM3AI2H	0.130
TM3AI2H	4 differential temperature inputs (I, I+, I-, I+)	Thermocouples (I, I+, I-, I+)	-	10 bits or 10 bits or 12 bits	28-pin	TM3AI2H	0.130
		RTDs (I, I+, I-, I+)	-	10 bits or 10 bits or 12 bits	28-pin	TM3AI2H	0.130



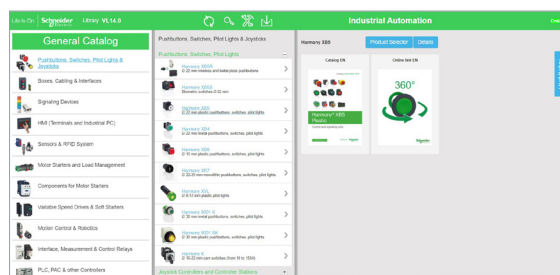
Each commercial reference presented in a catalog contains a hyperlink. Click on it to obtain the technical information of the product:

- Characteristics, Dimensions and drawings, Mounting and clearance, Connections and schemas, Performance curves
- Product image, Instruction sheet, User guide, Product certifications, End of life manual

## Find your catalog



- > With just 3 clicks, you can access the Industrial Automation and Control catalogs, in both English and French
- > Consult digital automation catalogs at [Digi-Cat Online](#)

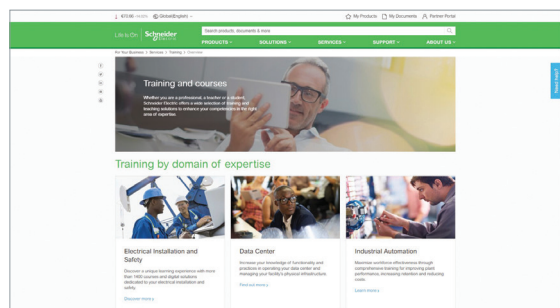


- Up-to-date catalogs
- Embedded product selectors, 360° pictures
- Optimized search by commercial references

## Select your training



- > Find the right [Training](#) for your needs on our Global website
- > Locate the training center with the selector tool, using this [link](#)



# General content

## Lexium™ MC12 multi carrier The multi carrier transport system

■ Introduction to EcoStruxure Machine .....	p. 2
■ Specifications of Lexium MC12 multi carrier .....	p. 4
■ Examples of applications	
- Filling,	
- Grouping,	
- Stacking,	
- Pick and Place,	
- Free movements .....	p. 5
■ System components to create a track .....	p. 6
■ Setting up	
- Designing a track	
- Connecting a track .....	p. 7
■ Complementary of offers .....	p. 8
■ Communication .....	p. 9
■ Embedded safety function SFO .....	p. 9
■ Main characteristics .....	p. 9
■ System component references	
- Longstator motor segment,	
- Braking resistor,	
- Connection module,	
- Communication interconnects,	
- Power interconnects,	
- Carrier,	
- Accessories .....	p. 10
- Guide rail,	
- Cables,	
- Power supply .....	p. 11
- Related offers .....	p. 11
■ Configuration .....	p. 12
■ Type code	
- Segment, Carrier .....	p. 13
- Rail, Bridge (Communication interconnect) .....	p. 14
- Accessories .....	p. 15
■ Product references index .....	p. 16

To be competitive in today's digital era, machine builders must be innovative. Smart machines, those that are better connected, more flexible, more efficient, and safe, are enabling machine builders to innovate in ways never before possible.

EcoStruxure, Schneider Electric's open, IoT-enabled architecture and platform, offers powerful solutions for the digital era. As part of this, EcoStruxure Machine brings powerful opportunities for machine builders and OEMs, empowering them to offer smart machines and compete in the new, digital era.

EcoStruxure Machine brings together key technologies for product connectivity and edge control on premises, and cloud technologies to provide analytics and digital services. EcoStruxure Machine helps you bring more innovation and added value to your customers throughout the entire machine life cycle.

**Innovation at Every Level for Machines is full systems across three layers:**

- Connected products  
Our connected products for measuring, actuating, device level monitoring, and control adhere to open standards to provide unmatched integration opportunities and flexibility
- Edge Control  
We are IIoT-ready with a proven set of tested and validated reference architectures that enable the design of end-to-end open, connected, and interoperable systems based on industry standards. Ethernet and OPC UA facilitates IT/OT convergence meaning machine builders reap benefits from web interfaces and cloud.

- Apps, Analytics & Services  
Seamless integration of machines to the IT layer allows the collection and aggregation of data ready for analysis – for machine builders and end users alike this means increased uptime and the ability to find information faster for more efficient operations and maintenance.

**These levels are completely integrated from shop floor to top floor. And we have cloud offers and end-to-end cybersecurity wrapped around.**

EcoStruxure Machine makes it easier for OEMs/ machine builders to offer their customers smarter machines. The advent of smart machines is driven by the changing needs of end users:

- Evolving workforce
- Reducing costs
- Dynamic markets
- Shorter life cycles
- Prioritizing functional safety and cybersecurity

EcoStruxure Machine provides one solution for the whole machine life cycle:

- With Smart Design & Engineering the time to market is reduced by up to 30% using our automated engineering and the simulation capabilities
- During Commissioning & Operation of the machine, resources such as energy, material and loss can be improved, and with seamless integration to the IT world efficiency can be improved by up to 40%
- Smart Maintenance & Services reduces the time for corrective actions up to 50%

# EcoStruxure™ Machine



\* The Schneider Electric industrial software business and AVEVA have merged to trade as AVEVA Group plc, a UK listed company. The Schneider Electric and Life is On trademarks are owned by Schneider Electric and are being licensed to AVEVA by Schneider Electric.

# Lexium MC12 multi carrier

## The multi carrier transport system

### Specifications

**Specifications of Lexium MC12 multi carrier**



Lexium MC12 multi carrier transport system

Lexium MC12 multi carrier is an innovative transport system to be used in machines. It uses latest linear motion technology to move products individually through the machine. These individual movements allow for new machine designs making machines faster, more flexible and space efficient.

**New level of performance & flexibility for more sustainability**

- Less format specific parts needed, a big step ahead in direction of toolless change over at a push of a button
- Leap in flexibility, larger variety of products can be run on the same machine

**Simplified operation and maintenance**

- Integral part of PacDrive 3 system diagnostic mechanisms
- Automatic configuration after replacement of segments or carriers
- Enhanced diagnostics and commissioning with EcoStruxure Machine Expert software
- Mobile app for diagnostics (Industrial Device)
- Integral part of Schneider Electric’s solution for remote monitoring/health monitoring and predictive maintenance (Machine Advisor)
- Modular mechanical design for quick replacements

**Differentiation & saving time in machine design for less time to market**

- Game changer for machine design  
Next generation of multi carrier system, providing new leeway for even better machine designs
- The evolution – mechanical camming – electronic camming – no camming – is providing new unknown potential for more flexible machines with less footprint!
- Efficient engineering and life cycle management with a single and well-known engineering tool
- Shorter time to market though easy and time saving mechanical/electrical/program implementation
- Virtual commissioning to verify machine behavior in an early implementation phase
- Transportation, grouping and positioning of products is completely decoupled from the machine cycle

**Increasing the Overall Equipment effectiveness of machine**

- > Higher flexibility – more formats per machine and simplified change over procedures with less format specific part
- > Optimized maintenance by high-service-parts
- > In summary resulting in higher machine uptime
- > Better use of production space through machines with less footprint

**Main fields of application**

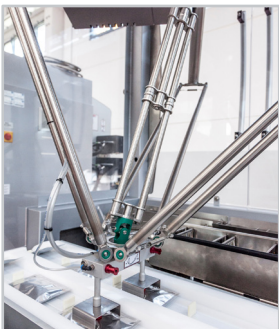
- Lexium MC12 multi carrier is transporting, grouping and positioning products in discrete processes for such typical applications:
  - > Packaging
    - Cartoning
    - Stacking (grouping)
    - Product flow adjustments (gap correction, position correction)
    - Filling, folding (tubes, bottles, pouches, ...)
    - Labelling
  - > Food processing
    - Applying
    - Cutting
  - > Assembly
    - Mechatronical products
    - Pharmaceutical products
  - > Material handling



Packaging application



Food processing application

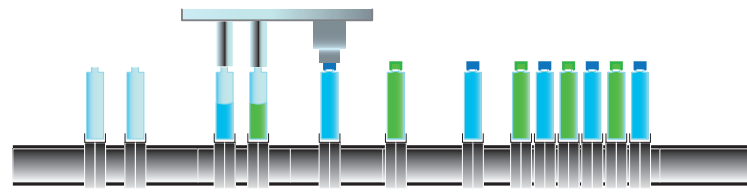


Material handling application

#### Examples of applications

The Lexium MC12 multi carrier system is a transport system for moving, positioning or grouping objects in machines for discrete processes.

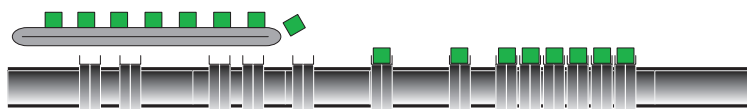
#### Filling



Filling

- Multi carrier replaces transportation chain
- Individual bottle movements
- Bottles move twice as fast through capping station
- Smaller gaps between products outside processing stations reduces footprint
- Clamping for different bottle diameters increases flexibility
- Less stations (cost savings)
- More compact
- Faster and simplified format change

#### Grouping



Grouping

- Products can be loaded on the fly
- Pocket size can be adjusted to adapt to formats or to simplify loading
- Products move individually, high performance, increasing group size does not impact performance
- Buffer between loading and unloading station can compensate jitter in product flow
- Flexible grouping patterns

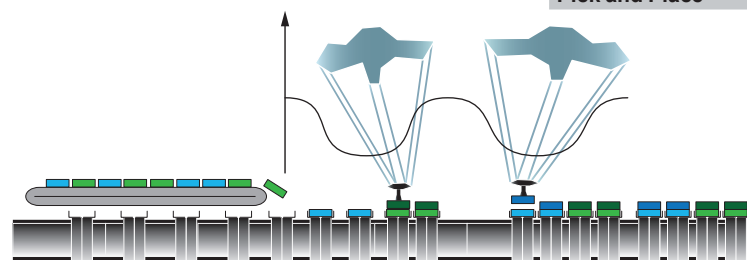
#### Stacking



Stacking and Grouping

- Pocket "grows" with products put into pocket
- Different products from different infeed stations can be stacked into same pocket
- Grouping of stacked products
- Products can be pushed together

#### Pick and Place



Pick and Place with variable speed of carrier

- More picks per min, products can be picked more often in robot sweet spot by slower speeds in working envelope and higher speeds during transfer (to next robot)
- Better accuracy, no belt slipping

#### Free movements



Free movements

- A carrier can be moved freely throughout the track. It can brake, accelerate, position or exert a constant force when stationary or also in motion. Like any linear motor, the carrier can synchronize on other movements. When arranged in a circle, the carriers move endlessly following the flow of product.
- Several carriers can all be moved independently of each other. They can be positioned at absolute positions over the entire distance traveled. In addition, they can be moved relative to each other and avoid collisions with their neighbour.

# Lexium MC12 multi carrier

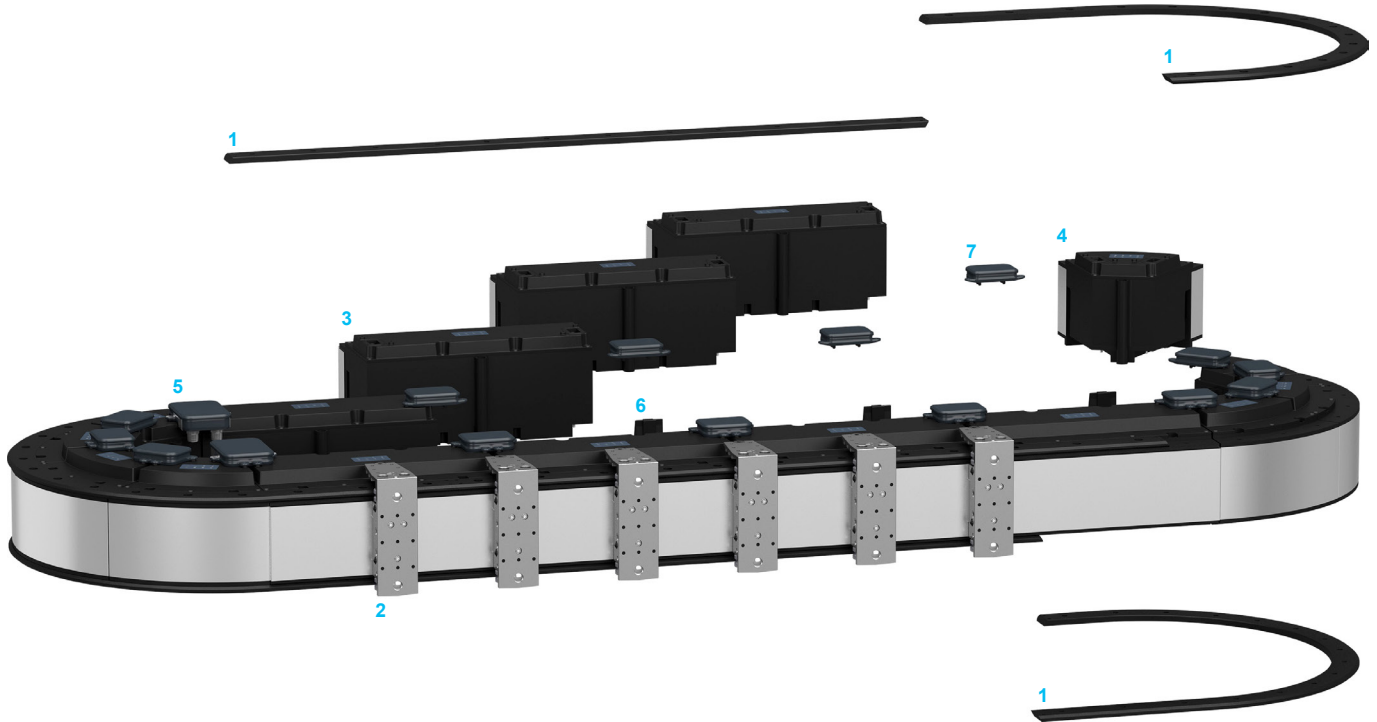
## The multi carrier transport system

### System components to create a track

#### System components to create a track

Lexium MC12 multi carrier is a modular system for machine applications and consists of long stator motors, on which multiple carrier units can be moved independently from each other.

- > The system components are designed for compact, modular, flexible and efficient machine designs. Lexium MC12 multi carrier can reduce engineering efforts, mechanical variants, and changeover time.
- > The components of Lexium MC12 multi carrier are mounted at the machine frame.



#### Guide rails 1

- > Same curve and straight guide rails are installed at top and bottom of the straight and curved long stator motor segments, used to handle the carriers. Guide rails are available in different length and can be combined freely.

#### Carriers 2

- > The carrier contains magnetic plates which, with the coil of the long stator motor segment can generate propulsive force. The encoder integrated in long stator motor segment measures the position of each carrier.
- > Up to 130 removable carriers can move on a same track. The motion of each carrier is independent from each other allowing different spacings, different cycle times, and different speeds (up to 4 m/s).
- > The minimal gap between two carriers is null.

#### Straight 3 and curve 4 longstator motor segments

- > These are linear motors with integrated power electronics and multi carrier position measurement. The longstator motor segments can be combined freely into open and closed tracks, and can be mounted from top on a base plate.
- > Integrated mechanical alignments simplify the mounting process.
- > No cabinet space is required for the drive electronics as it is integrated in the track segments.
- > Tracks can be designed in machines in horizontal or vertical position.
- > The maximum length of a track is 40 m (131.23 ft) (1)
- > Each segment is equipped with electronic type plates which enables the controller to identify the segments and the resulting track geometry automatically.

#### Communication interconnect 5

- > Communication interconnects are used to interconnect the straight or curve longstator motor segments and to support the transmission of the communication (Sercos III), and of the SFO safety function (Safe Force Off).

#### Connection modules 6

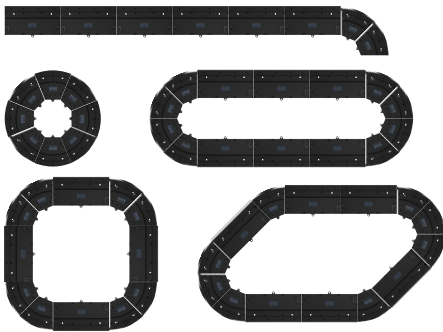
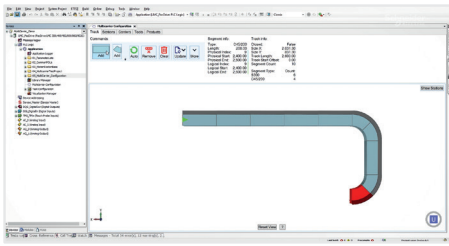
- > The Connection modules ensure the overvoltage protection, and the supply voltage monitoring.

#### Power interconnects 7

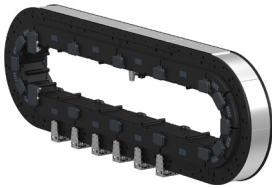
- > Power interconnects are used to interconnect the straight or curve longstator motor segments, and to support the transmission of the DC power, ensuring a quick wiring.
- > When mounting two longstators, supply voltage is automatically connected through.

(1) For track length of more than 20 m (65,61 ft), Please contact your SE representative.





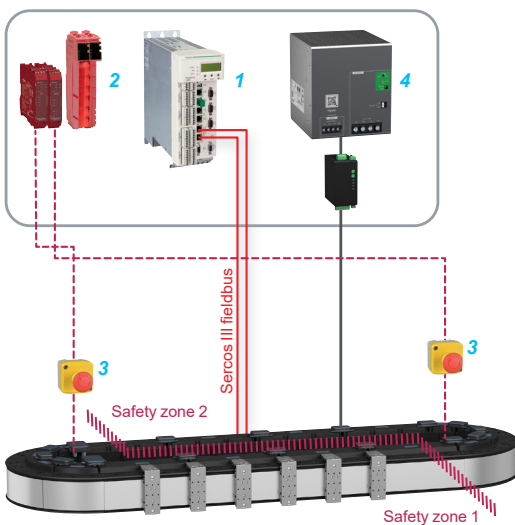
Available Open or closed track geometries



Vertical orientation



Horizontal orientation



Communication interconnects associated to Sercos as provided by LMCPro2 motion controller (1) and safe outputs: TM5SDO4TFS, TM5SDO4TAFS safety modules, and XPSMCMRO0004G, XPSMCMDO0004G modular safety modules (2) combined with Harmony XB5 Emergency stop pushbuttons (3).  
ABLU3A48200 (4): 3-phase power supply is dedicated to Lexium MC12 multi carrier system.

## Setting up the system components

### Designing a track

#### Shapes

- > Open tracks or closed tracks that can be realized with 300 mm (11.81 in) straight long stator motor segments and 200 mm (7.87 in) 45° outside curve long stator motor segments.
- > The Maximum track length is 40 m (131.23 ft) (1).
- > The free space left inside a track allows the integration of additional equipment such as Delta robots, reduces the space of an installation, and ease the access for service or maintenance.
- > **Track's orientation**
  - Track can be mounted in Vertical or Horizontal orientations.

### Connecting a track

#### Communication interconnects

- > There are different interconnects available, e.g. to connect Sercos cables or to connect Safe Force Off signal.
- > The communication interconnects ensure the Sercos communication and Safety function:
  - Once connected, the interconnects eliminate further wiring
  - Multiple safety zones are allowed with one connection per zone

#### Connection modules

- > Connection module are installed close to power supply, between power supply and power connector at track. They provide the internal DC Bus and power supply on tracks, they ensure the overvoltage protection, and the supply voltage monitoring.
- > The Internal DC Bus and the power supply (48 V DC) are automatically connected through when mounting two segments.
  - No wiring is required between the segments
  - Up to three 48 V power supplies can be installed in parallel according to the needs of application
  - The Power infeed is applied in parallel at straight and/or curves long stator segments

#### Power interconnects

- > There are different versions available, e.g. with a power connector to connect power to the track or a disconnector which allows to split a track into different power zones.
- > The power interconnects ensure the power distribution in the track. They are mounted at the bottom side and provide an alignment aid helping to mount the long stator motor segments properly.

(1) For track length of more than 20 m (65,61 ft), Please contact your SE representative.

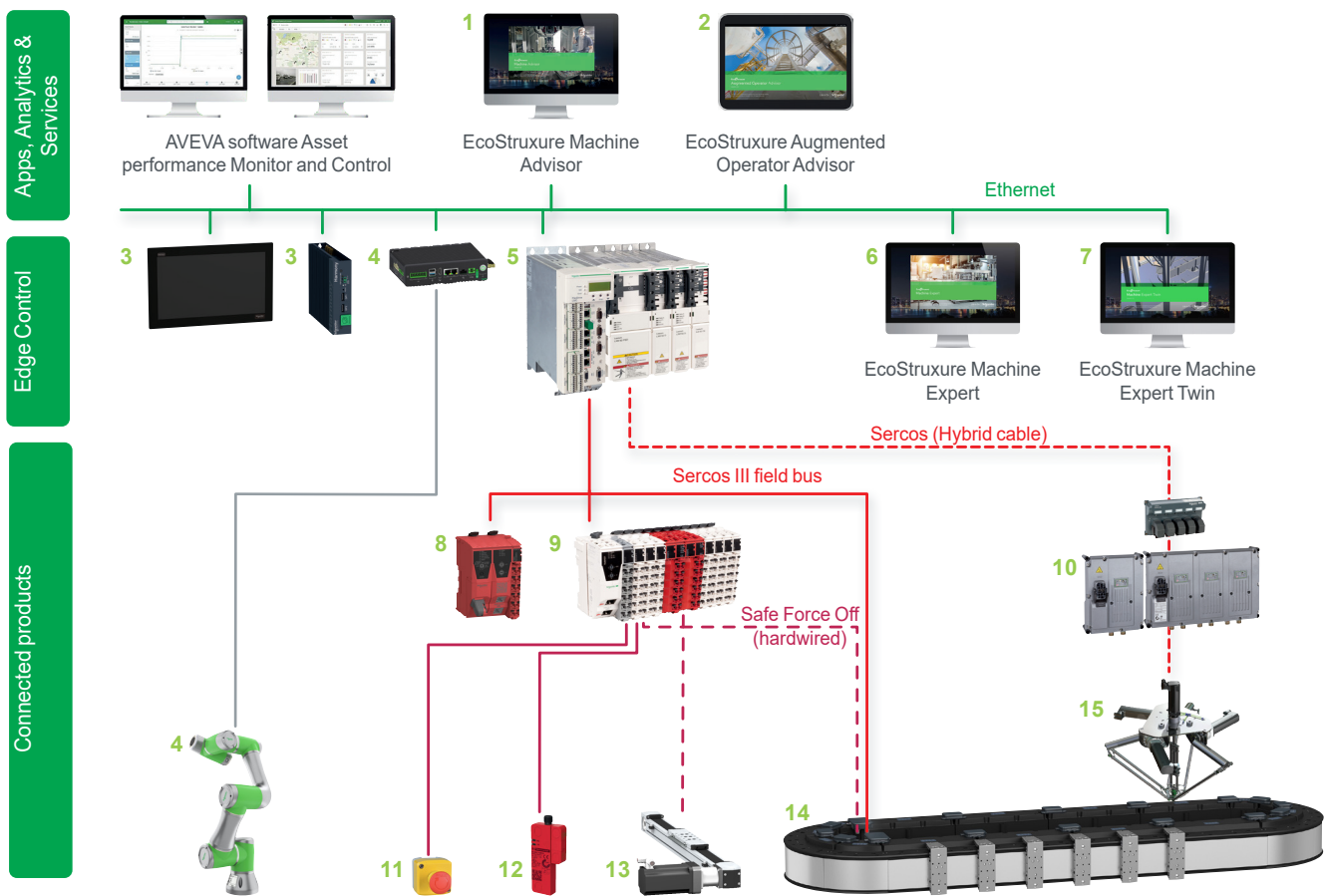
# Lexium MC12 multi carrier

## The multi carrier transport system

### Complementary of offers

#### Complementary of offers

- Control** > Lexium MC12 multi carrier is integrated into PacDrive 3 system, using PacDrive 3 motion controllers (LMC Pro2). Lexium MC12 becomes part of PacDrive 3 architecture.
- Configuration** > Lexium MC12 multi carrier applications can be developed and commissioned with dedicated application libraries (CAD, Eplan, Application function block, ...) embedded in **EcoStruxure Machine Expert**, Schneider Electric's single engineering environment for developing, configuring and commissioning complete automation solutions, with less time to market.  
The multi dimensional software architecture allows visualization and simulation during the conception of a motion centric machine.
- > Lexium MC12 multi carrier is part of the EcoStruxure Machine Expert Twin software, **Builder** and **Visu** license (integrated in EcoStruxure Machine Expert):
- EcoStruxure Machine Expert **Visu** together with the Multi Carrier Configurator of Machine Expert is allowing users to automatically create Digital twin models of 1 multi carrier, allowing to visualize 3D models for testing purposes.
  - EcoStruxure Machine Expert Twin **Builder** is allowing users to automatically generate digital twin models from tracks pre-defined in Machine Expert and deployed to a PacDrive LMC. Multiple models can be generated.
- Related products** > Schneider Electric offers several ranges of robots and products (actuators, control systems) to complete a PacDrive 3 automation solution.
- > The compact design of the Lexium MC12 multi carrier leaves space to mount additional equipment like Delta robots within closed tracks.



- |   |   |
|---|---|
| 1 <a href="#">EcoStruxure Machine Advisor</a>   | 8 <a href="#">Modicon TM5CSLC Safety logic controller</a>   |
| 2 <a href="#">EcoStruxure Augmented operator Advisor</a>                                | 9 <a href="#">Modicon TM5: Sercos interface module, Safety IO expansion module, IO expansion module (IP 20)</a> |
| 3 <a href="#">Harmony iPC panel, Harmony Edge box</a>                                   | 10 <a href="#">Lexium 62 ILD detached servo drives</a>  |
| 4 <a href="#">Lexium Cobot: Collaborative robot and Cobot compact controller (1)</a>    | 11 <a href="#">Harmony XALD Harmony XB5 Emergency stop pushbuttons</a>  |
| 5 <a href="#">PacDrive LMC Pro2 Motion controller, Lexium 62 Multi axis servo drive</a> | 12 <a href="#">Telemecanique XCSR contactless RFID safety switch</a>  |
| 6 <a href="#">EcoStruxure Machine Expert software</a>                                   | 13 <a href="#">Lexium PAS: Linear axes with fixed axis body</a>   |
| 7 <a href="#">EcoStruxure Machine Expert Twin software</a>                              | 14 <a href="#">Lexium MC12 multi carrier</a>  |
|   | 15 <a href="#">Lexium P Delta 3 robot</a>   |

(1) Scheduled for commercialization in the third quarter of 2023.

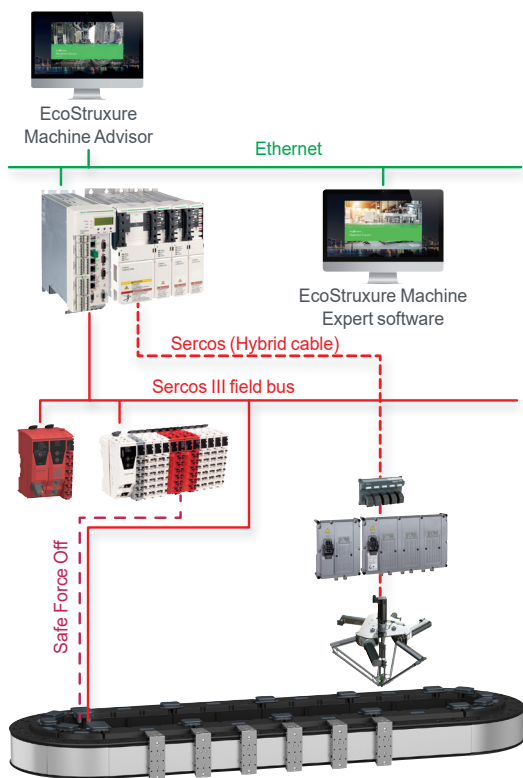
# Lexium MC12 multi carrier

## The multi carrier transport system

Communication, Embedded safety function SFO, Main characteristics

**Sercos**  
the automation bus

- Cat 5e
- Baudrate: 100 Mbps
- Cycle time: 1...4 ms



### Communication

Lexium MC12 multi carrier is communicating via Sercos III automation bus, and controlled by the PacDrive 3 LMC Pro2 motion controller.

- Each carrier is handled as Sercos device by the system with a Sercos ID and a reserved area for communication, similar to a servo drive in configuration and application.

### Embedded safety function SFO

Lexium MC12 multi carrier is an integral part of the Machine safety system with its drive embedded Safe Force Off (SFO) function.

- This function meets the requirements of SIL 3 according IEC 61800-5-2, IEC 62061 and IEC 61508 as well as up to category 3 and PLe according to EN ISO 13849-1.
- It simplifies the setup of installations requiring complex safety equipment and improves performance during maintenance operations.

### Main characteristics (1)

Lexium MC12 multi carrier		
Peak Force (2)		120 N (26.97 lbf)
Total mass (3)		≤ 3 kg (6.61 lb)
Nominal mass of a carrier		0,8 kg (1.76 lb)
Max. payload per carrier		2.2 kg (4.85 lb)
Max. acceleration for 1 kg (2.204 lb)		120 m/s <sup>2</sup> (393.70 ft/s <sup>2</sup> )
Max. speed		4 m/s (13.12 ft/s)
Length	Straight longstator segment	300 mm (11.81 in)
	Curve longstator segment	200 mm (7.87 in) – Radius: 255 mm (10.04 in)
Repetitive accuracy (4)	Straight longstator segment	0.03 mm (0.001 in)
	Curve longstator segment	0.05 mm (0.002 in)
Absolute accuracy	Straight longstator segment	0.25 mm (0.009 in)
	Curve longstator motor	0.35 mm (0.013 in)
IP Class		IP65
Cleanroom Class (ISO / GMP)		5 / A targeted
Max. number of carriers	per track	Equals max. number of servo axis controller can handle (currently up to 130)
	per segment	6 carriers on Straight longstator segment 4 carriers on Curve longstator segment
Carrier	Width x Height	50 x 143 mm (1.96 x 5.63 in)
	Weight without load	0.8 kg (1.763 lb)
Max. track length		40 m (131.23 ft) (5)

(1) More characteristics on [Product datasheet](#).

(2) Max. force generated in moving direction of carrier, Peak force can be increased by use of multiple carriers together.

(3) Mass of the carrier plus payload.

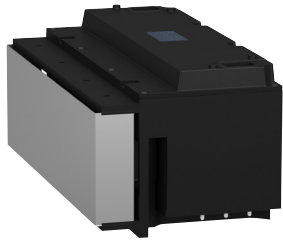
(4) Single carrier to single point accuracy.

(5) For track length of more than 20 m (65,61 ft), Please contact your SE representative.

# Lexium MC12 multi carrier

## The multi carrier transport system

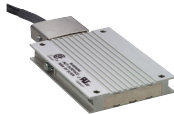
### System components



LXMMC12MS06S100



LXMMC12MA02S100



LXMMCABR120S100



LXMMCACMD02S100



LXMMCBCA001S100



LXMMCBCAS01S100



LXMMCBCAF01S100



LXMMCBDASF1S100



LXMMCBDAS01S100



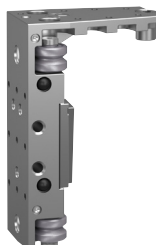
LXMMCBPA001S100  
LXMMCBPA00XS100



LXMMCBPAP01S100



LXMMCBPAB01S100



LXMMC12CA51S100



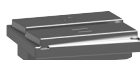
LXMMCACT0A1S100



LXMMCAMGEALS100



LXMMCARS0AXS100



LXMMCAMGMALS100



VW33MAP22

### System components

Designation	Description	Reference (1)	Weight kg lb
<b>Longstator motor segment</b> to create tracks			
<b>Longstator motor segment</b> with an integrated drive, IP65	Straight segment Length: 300 mm (11.81 in)	<a href="#">LXMMC12MS06S100</a>	7.900 17.41
	Curve segment 45° arc	<a href="#">LXMMC12MA02S100</a>	4.500 9.92
<b>Braking resistor</b> to increase the amount of energy that can be absorbed during deceleration phases of demanding applications			
<b>Braking resistor</b> (to connect to Connection module)	Degree of protection: IP65 Ohmic value: 3 Ω Continuous power: 100 W Connection cable length: 2 m (78.74 in)	<a href="#">LXMMCABR120S100</a>	0.600 1.32
<b>Connection module</b> providing the internal DC Bus and power supply on tracks			
<b>Connection module</b>	20 A continuous power to connect track to power supply Installed between two segments	<a href="#">LXMMCACMD02S100</a>	0.045 0.09
	Connection module connector kit (Spare part)	<a href="#">LXMMCACMCS1S100</a>	0.045 0.09
<b>Communication interconnects</b> supporting the transmission of communication (Sercos III), and/or SFO safety function (Safe Force Off)			
<b>Communication interconnects</b>	Communication interconnect between segments	Sold by 1 piece <a href="#">LXMMCBCA001S100</a>	0.050 0.11
		Sold by 10 pieces <a href="#">LXMMCBCA00XS100</a>	0.100
		With two additional Sercos connectors (infeed port/outfeed port) <a href="#">LXMMCBCAS01S100</a>	0.22
		With one additional SFO connector <a href="#">LXMMCBCAF01S100</a>	
		To use at the beginning of an open track With one additional Sercos connector (infeed port) and one additional SFO connector <a href="#">LXMMCBDASF1S100</a>	
	To use at the end of an open track With one additional Sercos connector (outfeed port) <a href="#">LXMMCBDAS01S100</a>		
<b>Power interconnects</b> supporting the transmission of the DC power			
<b>Power interconnects</b>	To use between segments	1 piece <a href="#">LXMMCBPA001S100</a>	0.400 0.88
		Sold by 10 pieces <a href="#">LXMMCBPA00XS100</a>	3.500 7.71
		With M23 power infeed connector <a href="#">LXMMCBPAP01S100</a>	0.600 1.32
<b>Power disconnecter</b>	Used to separate the DC bus between segments	<a href="#">LXMMCBPAB01S100</a>	0.400 0.88
<b>Carrier</b>			
<b>Carrier</b>	Carrier for Lexium MC12 multi carrier	1 piece <a href="#">LXMMC12CA51S100</a>	0.800 1.76
		Sold by 10 pieces <a href="#">LXMMC12CA5XS100</a>	8.000 17.6
<b>Carrier handling tool</b>	Handling tool to put carrier on track or to remove carrier from track	<a href="#">LXMMCACT0A1S100</a>	0.520 1.15
<b>Carrier roller replacement set</b>	10 sets of 4 rollers and required screws, 10x2 lubrication pads	<a href="#">LXMMCARS0AXS100</a>	0.500 1.1
<b>Encoder magnet for carrier</b>		Sold by 50 pieces	<a href="#">LXMMCAMGEALS100</a> 0.200 0.44
<b>Motion magnet set for carrier</b>		Sold by 50 pieces	<a href="#">LXMMCAMGMALS100</a> 1.850 4.08
<b>Accessories</b>			
<b>Material test kit 1</b>	Material probes for resistance tests	<a href="#">LXMMCAMK001S100</a>	1.250 2.76
<b>Set of hard stops</b>	Set of 2 (one hard stop for each end of the track) To stop carriers at the end of an open track	<a href="#">LXMMCAHS001S00</a>	6.300 13.89
<b>Single-hand lubrication gun</b>	To refill the lubrication reservoirs of the carriers Oil capacity: 120 cc Delivery volume: 0.5 cc/stroke	<a href="#">VW33MAP22</a>	0.563 1.241

(1) Click on reference to get technical characteristics.

# Lexium MC12 multi carrier

## The multi carrier transport system

### System components



LXMMCRS0A06S100



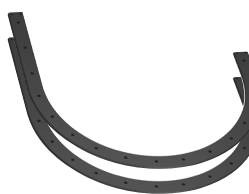
LXMMCRABA62S100



LXMMCRABA64S100

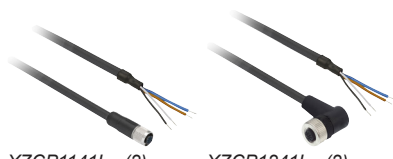


LXMMCRABA66S100



LXMMCRABA68S100

LXMMCAPC●●●S100



XZCP1141L● (2)

XZCP1241L● (2)



VW3E3065R0



ABLU3A48200

### System components

Designation	Description	Reference (1)	Weight		
			kg	lb	
<b>Guide rail holding the segments</b>					
Guide rail sets	Set of top and bottom guide rails for straight segment	1 unit of length, straight	<a href="#">LXMMCRS0A06S100</a>	1.300	2.86
		2 units of length, straight	<a href="#">LXMMCRS0A12S100</a>	2.500	5.51
		3 units of length straight	<a href="#">LXMMCRS0A18S100</a>	3.800	8.37
		4 units of length, straight	<a href="#">LXMMCRS0A24S100</a>	5.000	11.00
		5 units of length, straight	<a href="#">LXMMCRS0A30S100</a>	6.200	13.66
	Open track with curves	0.5 units of length	<a href="#">LXMMCRSE0A03S100</a>	0.700	1.54
		Set of top and bottom guide rails for curve segment	45° arc, 1 unit of length straight	<a href="#">LXMMCRABA62S100</a>	2.200
		90° arc, 1 unit of length straight	<a href="#">LXMMCRABA64S100</a>	3.000	6.61
		135° arc, 1 unit of length straight	<a href="#">LXMMCRABA66S100</a>	3.800	8.37
		180° arc, 1 unit of length straight	<a href="#">LXMMCRABA68S100</a>	4.600	10.14
	360° arc	<a href="#">LXMMCRA0A00S100</a>	6.600	14.55	

### Cables

Description	For use	Length of cable		Reference (1)	Weight		
		m	ft		kg	lb	
Power cables M23 connector (Power interconnect side), free wires (connection module side)	Between Connection module LXMMCACMD02S100 and Power interconnect LXMMCBPAP01S100	2	6.56	<a href="#">LXMMCAPC020S100</a>	0.500	1.10	
		4	13.12	<a href="#">LXMMCAPC040S100</a>	0.900	2.00	
		6	6.56	<a href="#">LXMMCAPC060S100</a>	1.300	2.86	
		8	26.24	<a href="#">LXMMCAPC080S100</a>	1.700	3.74	
		10	32.80	<a href="#">LXMMCAPC100S100</a>	2.100	4.62	
		12	39.37	<a href="#">LXMMCAPC120S100</a>	2.500	5.51	
		14	45.93	<a href="#">LXMMCAPC140S100</a>	2.900	6.39	
		16	52.49	<a href="#">LXMMCAPC160S100</a>	3.300	7.27	
		18	59.05	<a href="#">LXMMCAPC180S100</a>	3.700	8.15	
		20	65.61	<a href="#">LXMMCAPC200S100</a>	4.100	9.04	
Pre-wired connectors for SFO safety function (2) M12, 4-pin connectors Metal clamping ring PUR cable	Between Modicon TM5 safety IO module and Communication interconnects (SFO)	Straight	2	6.56	<a href="#">XZCP1141L2</a>	0.090	0.198
			5	16.40	<a href="#">XZCP1141L5</a>	0.190	0.418
			10	32.80	<a href="#">XZCP1141L10</a>	0.370	0.815
		Elbowed	2	6.56	<a href="#">XZCP1241L2</a>	0.090	0.198
			5	16.40	<a href="#">XZCP1241L5</a>	0.190	0.418
			10	32.80	<a href="#">XZCP1241L10</a>	0.370	0.815
Sercos cables	Between LMC Pro2 motion controller or Moricon TM5 safety controller and Communication interconnects (with Sercos connector)	3	9.84	<a href="#">VW3E3065R030</a>	1.367	3.01	
		5	16.40	<a href="#">VW3E3065R050</a>	0.557	1.23	
		10	32.81	<a href="#">VW3E3065R100</a>	1.075	2.37	

### Dedicated offer

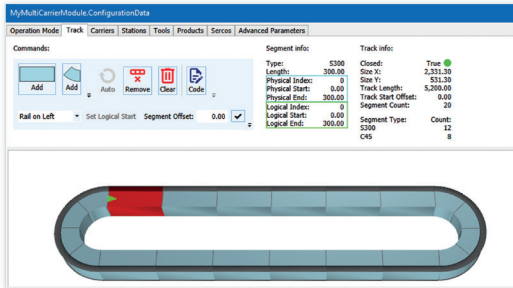
Designation	Description	Reference (1)
3-phase Power supply for industrial use, rail mounting	Input voltage: 380...500 Vac Output voltage: 48 Vdc Nominal power: 960 W Nominal current: 20 A	<a href="#">ABLU3A48200</a>

### Related offers

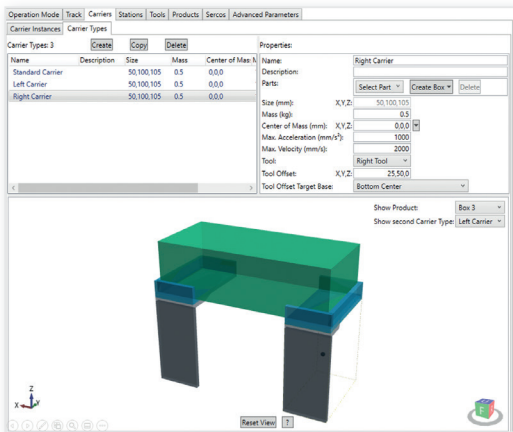
Title	Consult catalog (1)
EcoStruxure Machine Expert configuration software	<a href="#">DIA3ED2180701EN</a>
PacDrive3 a complete automation solution for motor centric machines	<a href="#">DIA3ED2160301EN</a>
PacDrive LMC Pro2 Motion controller for automating machines/lines with 0 – 130 servo or robot axes	<a href="#">DIA7ED2160303EN</a>
Lexium 62 Multi axis servo drive and servo motors	<a href="#">DIA7ED2160305EN</a>
Lexium 62 ILM Multiaxis integrated servo drives	<a href="#">DIA7ED2160306EN</a>
Lexium 62 ILD detached servo drives: single drive, triple drive	<a href="#">DIA3ED2161202EN</a>
Lexium T, P Delta 2 and Delta 3 robots for pick & place solutions	<a href="#">DIA3ED2160307EN</a>
Lexium Cobot, Collaborative robot	<a href="#">DIA7ED2220801EN</a>
Modicon TM5 High-Performance and Safe IP20 Modular I/O system	<a href="#">DIA3ED2131204EN</a>

(1) Click on [reference](#) to get technical characteristics.

(2) Those Pre-wired connectors are sold by our partner Telemecanique Sensors.



Track configuration



Carrier configuration



Catalog ref. [DIA3ED2180701EN](#)

## Configuration

### Toolset covering the machine life cycle

- Design & Engineering
  - Physical configuration of the track or generated from scan
  - Definition of coordinate system and direction
  - Handling physical dimensions of carriers and products
  - Visualization and virtual commissioning of multi carrier system
- Implement
  - Library
  - Mechanical bricks mounted by the OEM
  - Configurator
- Operating, Maintenance & services
  - Monitoring with Ecostruxure Machine Advisor
  - Visualization

## Software

- As Lexium MC12 multi carrier becomes part of PacDrive architecture, its configuration is managed with Ecostruxure Machine Expert software (1) :
  - Deep integration into engineering environment
  - Different usability levels
  - Motion synchronization capabilities
  - Simulation
  - Visualization
  - Virtual commissioning

## Libraries

- For the efficient
  - Predefined functions for common needs, like carrier queuing, two carrier clamping, multi carrier positioning and release, automatic gap control between moving carriers, ...
- For the experienced
  - Functions working on track level, like scanning a track, management of carriers on the track, monitoring and emergency reactions on track level
- For the experts
  - Carriers are represented like servo axis in the system
  - Existing functionality, e.g. camming can be applied to move carriers
  - Full freedom with full responsibility to manage all movements

(1) Consult catalog ref. [DIA3ED2180701EN](#)

# Lexium MC12 multi carrier

## The multi carrier transport system

### Segment, Carrier

Type code													
To order a Segment, make up the reference as follows:													
	Family			Group		Model	Segment type	Segment geo	Length	Variant	Revision	Reserved	
<b>Example</b>	L	X	M	M	C	12	M	S	06	S	1	00	
Product family	L	X	M										
Product group	MC: Multicarrier			M	C								
Model	12 = 120N Peakforce					12							
Segment	M = Standard segment						M						
Segment geometry	S= Straight							S					
	A= Arc outside							A					
Length	for straight segments length given in n50 mm (n1.96 in), e.g 06 = 300 mm (11.81 in)								06				
	for curved segments angle is given in n22,5°, e.g 02 = 45°								02				
Variant	Standard (Anodized Aluminum, IP65)									S			
Revision	1 = Initial version										•		
Reserved	Reserved: always 00											00	

To order a Carrier, make up the reference as follows:														
	Family			Group		Model	Product group	Type	Length	Quantity	Variant	Revision	Reserved	
<b>Example</b>	L	X	M	M	C	12	C	A	5	1	S	1	00	
Product family	L	X	M											
Product group	MC: Multicarrier			M	C									
Model	120 N Peakforce					12								
Carrier	Always C for carrier						C							
Type (equals to model of rail)	Reserved: allways A							A						
Size	50 mm (1.96 in)								5					
Quantity	1 piece									1				
	10 pieces									X				
Variant	Standard (Anodized Aluminum, IP65)										S			
Revision	1 = Initial Version											•		
Reserved	Reserved: allways 00												00	

# Lexium MC12 multi carrier

## The multi carrier transport system

### Rail, Bridge (Communication interconnect)

Type code													
To order a Rail (1), make up the reference as follows:													
	Family			Group		Rail	Geo. 1	Geo. 2	Model	Size	Variant	Revision	Reserved
<b>Example</b>	L	X	M	M	C	R	A	0	A	02	S	1	00
Product family	L	X	M										
Product group	MC: Multicarrier			M	C								
Product detail	R: Rail					R							
Geometry 1	S= Straight						S						
	A= Arc outside						A						
Geometry 2	0= no straight at end(s)							0					
	E= End of open track with curve							E					
	B= Straight at both sides							B					
Model	Reserved: always A								A				
Size	nn / (ul/6) ul equals length of straight segment + air gap between segments. ul/6 equals approx. 50 mm (1.96 in)									••			
	30 equals a length of 5 segments + air gaps => approx. 1.5 m (4.92 ft) rail max. rail length is 1,5 m												
Variant	S = Standard (Anodized Aluminum, IP65)										S		
Revision	1 = Initial Version											•	
Reserved	Reserved: always 00												00

(1) Rails are always sold as a set of two rails (bottom and top rail).

(2) Max. rail length is 1,5 m (4.92 ft).

To order a Communication interconnect, make up the reference as follows:														
	Family			Group		Bridge	Bridge type	Model	Supplies	Quantity	Variant	Revision	Reserved	
<b>Example</b>	L	X	M	M	C	B	C	A	0	0	1	S	1	00
Product family	L	X	M											
Product group	MC= Multicarrier			M	C									
Product detail	B= Communication interconnect					B								
Bridge type	C= Communication closed track						C							
	D = Communication open end of track						D							
	P = Power closed track						P							
	Q = Power open end of track						Q							
Model	A= stands for current Bridge design							A						
Supplies up to 2 different inputs/outputs can be specified	0 = no supply, plain interconnect								0	0				
	D = disconnecter, interrupts connection between segment, no supply								D	D				
	P = Power supply								P	P				
	S = Bus supply (Sercos III)								S	S				
	F = Safe Force Off								F	F				
Quantity	1 = 1, X = 10										•			
Variant	S = Standard (Anodized Aluminum, IP65)										S			
Revision	1 = Initial version											•		
Reserved	Reserved: always 00												00	



Type code													
To order an Accessory, make up the reference as follows:													
			Family			Group		Accessory	Type	Specifics	Variant	Revision	Reserved
<b>Example</b>			L	X	M	M	C	A	RS	0AX	S	1	00
Product family			L	X	M								
Product group			MC: Multicarrier			M	C						
Accessory			A: Accessory					A					
Accessory type	Type	Specifics	Variant										
	FC= Safe Force Off cable	xxx: length / 10 cm (3.93 in)	S					FC	●●●	S			
	LU= Lubricant	xxx quantity / ml	S					LU	●●●	S			
	RS= Roller set	Oxy: 0 Roller Type, x: type of rail see rails-model for coding, y qty: 1= 1, X= 10, L= 50						RS	0●●				
	MG= Magnet	xAy: x: Type of Magnet: E= Encoder, M= Motion, Variant = A, y qty: 1= 1, X= 10, L= 50						MG	●A●				
	CT= Carrier drop tool	0A1: 0 is not used, A variant of drop tool, 1 quantity						CT	0A●				
	SC= Screw sets	xAy: x: Type of screw: S= Segment, y qty, 1= 1, X= 10, L= 50						SC	●A●				
	CM= Connection module 20A	D02	S					CM	D02	S			
	CM= Connection module connector kit	CS1	S					CM	CS1	S			
	MK= Material kit	001						MK	001				
Revision	1 = Initial version											●	
Reserved	Reserved: allways 00												00

A	
ABLU3A48200	11
L	
LXMMC12CA51S100	10
LXMMC12CA5XS100	10
LXMMC12MA02S100	10
LXMMC12MS06S100	10
LXMMCABR120S100	10
LXMMCACMCS1S100	10
LXMMCACMD02S100	10
LXMMCACT0A1S100	10
LXMMCAHS001S00	10
LXMMCAMGEALS100	10
LXMMCAMGMALS100	10
LXMMCAMK001S100	10
LXMMCAPC020S100	11
LXMMCAPC040S100	11
LXMMCAPC060S100	11
LXMMCAPC080S100	11
LXMMCAPC100S100	11
LXMMCAPC120S100	11
LXMMCAPC140S100	11
LXMMCAPC160S100	11
LXMMCAPC180S100	11
LXMMCAPC200S100	11
LXMMCARSA0XS100	10
LXMMBCA001S100	10
LXMMBCA00XS100	10
LXMMBCAF01S100	10
LXMMBCAS01S100	10
LXMMCBDAS01S100	10
LXMMCBDASF1S100	10
LXMMCBPA001S100	10
LXMMCBPA00XS100	10
LXMMCBPAB01S100	10
LXMMCBPAP01S100	10
LXMMCRA0A00S100	11
LXMMCRABA62S100	11
LXMMCRABA64S100	11
LXMMCRABA66S100	11
LXMMCRABA68S100	11
LXMMCRS0A06S100	11
LXMMCRS0A12S100	11
LXMMCRS0A18S100	11
LXMMCRS0A24S100	11
LXMMCRS0A30S100	11
LXMMCRSEA03S100	11
V	
VW33MAP22	10
VW3E3065R030	11
VW3E3065R050	11
VW3E3065R100	11
X	
XZCP1141L10	11
XZCP1141L2	11
XZCP1141L5	11
XZCP1241L10	11
XZCP1241L2	11
XZCP1241L5	11

Life Is On



Learn more about our products at  
[www.se.com](http://www.se.com)

The information provided in this documentation contains general descriptions and/or technical characteristics of the performance of the products contained herein. This documentation is not intended as a substitute for and is not to be used for determining suitability or reliability of these products for specific user applications. It is the duty of any such user or integrator to perform the appropriate and complete risk analysis, evaluation and testing of the products with respect to the relevant specific application or use thereof. Neither Schneider Electric nor any of its affiliates or subsidiaries shall be responsible or liable for misuse of the information contained herein.

Design: Schneider Electric  
Photos: Schneider Electric

**Schneider Electric Industries SAS**

Head Office  
35, rue Joseph Monier - CS 30323  
F-92500 Rueil-Malmaison Cedex  
France

DIA7ED2210701EN  
April 2023 - V2.2