

SoMachine

SoMachine Motion, Programming
software for PacDrive 3 Automation
solution

Catalog

March **2016**



How can you fit a 6000-page catalog in your pocket?

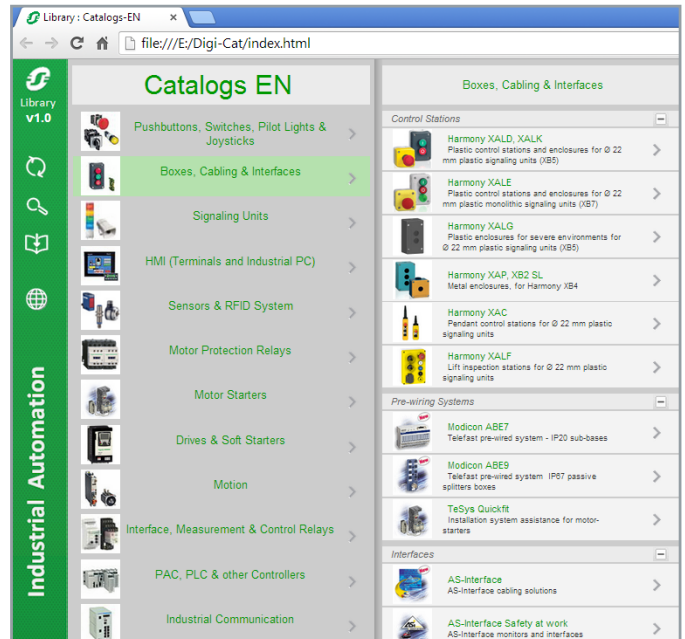
Schneider Electric provides you with the complete set of industrial automation catalogs all on a handy USB key for PC or in an application for tablets



Digi-Cat, a handy USB key for PC



- > Convenient to carry
- > Always up-to-date
- > Environmentally friendly
- > Easy-to-share format



Contact your local representative to get your own Digi-Cat



e-Library, the app for tablets

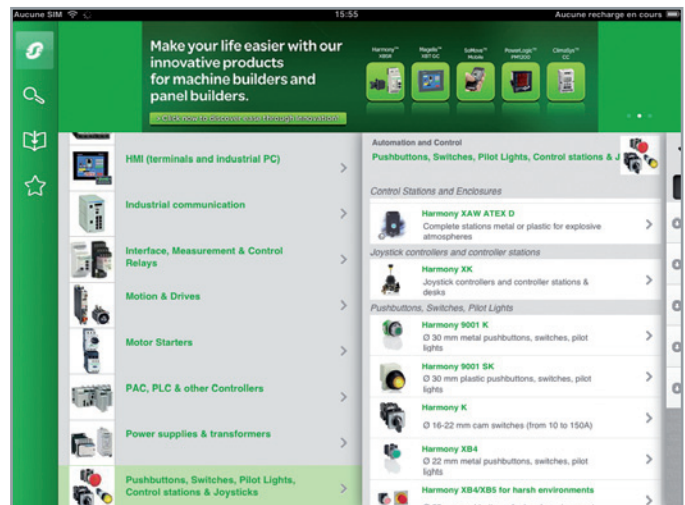
If you have an iPad®:

- > Go to the App Store and search for e-Library
- > or scan the QR code



If you have an Android tablet:

- > Go to the Google Play Store™ and search for eLibrary
- > or scan the QR code



General contents

SoMachine Motion Programming software for PacDrive 3 Automation solution

■ Presentation	<i>page 2</i>
■ General characteristics	
- Logic Builder	<i>page 2</i>
- Motion centric machine application development	<i>page 3</i>
- Motion Builder.....	<i>page 5</i>
■ References	
- Product offer	<i>page 6</i>
- SoMachine Motion software	<i>page 6</i>
- License update from previous version	<i>page 6</i>
- Runtime licensed features and license points	<i>page 7</i>
- License points without flash card	<i>page 7</i>
- Flash card with license points included, for use with PacDrive LMC controllers for non-robotic applications	<i>page 7</i>
- Flash cards with license points (spare parts for robot controllers).....	<i>page 7</i>
■ Index	<i>page 8</i>

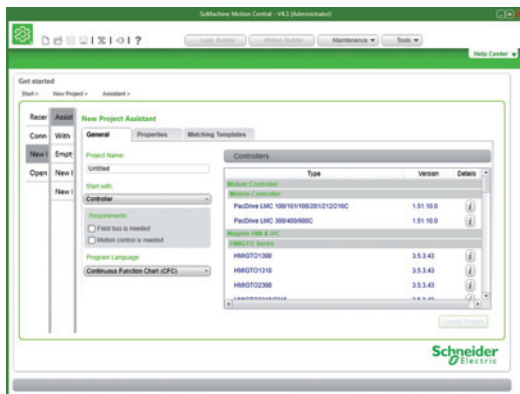
SoMachine

SoMachine Motion, Programming software for PacDrive 3 Automation solution

Presentation
Software solution



SoMachine Motion programming software



Create a new project through the central

SoMachine Motion programming software is compliant with IEC 61131-3. It can be used to develop, configure, and commission entire PacDrive systems.

- SoMachine Motion proposes one project file, managed through the Central (new project) and is aligned with SoMachine V4.1 (same look and feel).
- SoMachine Motion engineering tools can be accessed through this single project file:

- **Logic Builder:** a programming environment for PacDrive controllers
- **Motion Builder:** motion design and sizing software for drives, motors, gearboxes, power supplies
- **SoSafe Programmable:** a programming environment for Modicon TM5SLC safety logic controllers.
- **Vijeo Designer:** the HMI configuration software for Magelis panels (1) is integrated in SoMachine Motion. Vijeo Designer can be used without the need for a separate license.

- **SoMachine Motion** maintenance tools, which can be started from the Central or stand-alone, provide the following functions:

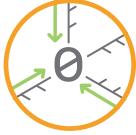
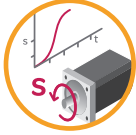


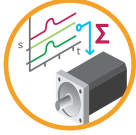

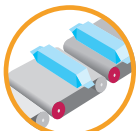
- **Diagnostics:** obtain a snapshot of the current machine status, including loggers, device parameters, I/O status, and a graphical architecture view of the Sercos ring. Additional user-defined data can be provided by the machine.
- **Controller assistant:** backup and image management; firmware update for controllers; Fast Device Replacement can also update the firmware of Sercos devices
- **Device Assistant:** for direct updates of Sercos device firmware

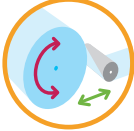
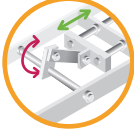

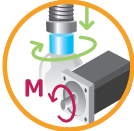
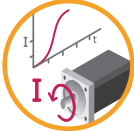
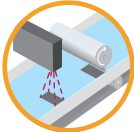


Nota: For the Embedded safety or standalone safety solution software, Please refer to our catalog "Pacdrive 3 automation solution - Safety Modicon TM5-TM7".

General characteristics

Feature	Description
Logic Builder IEC 61131-3 programming languages	<ul style="list-style-type: none"> ■ IL (Instruction List) ■ LD (Ladder Diagram) ■ SFC (Sequential Function Chart) ■ ST (Structured Text) ■ FBD (Function Block Diagram) ■ + CFC (Continuous Function Chart)
Programming services	<ul style="list-style-type: none"> ■ Multi-tasking: Cyclic, Fast, Event ■ Functions (Func) and Function Blocks (FBs) ■ Data Unit Types (DUTs) ■ On-line changes ■ Watch windows ■ Graphical monitoring of variables (trace) ■ Breakpoints, step-by-step execution ■ Visualization for application and machine set-up
Motion services	<ul style="list-style-type: none"> ■ Embedded device configuration and commissioning ■ CAM profile editor ■ Sample application trace ■ Visualization screens ■ Logical encoder
Global services	<ul style="list-style-type: none"> ■ User access and profile ■ Project documentation printing ■ Project comparison (control) ■ Variable sharing based on publish/subscribe mechanism ■ Library version management
Advanced software development	<ul style="list-style-type: none"> ■ Source Code Management with Subversion (SVN) ■ ETEST Unit Testing Framework ■ Scripting with Python ■ Import/Export in PLC Open format

(1) Please refer to our catalog "Human/Machine Interface, HMI configuration software".

General characteristics	
Feature	Description
Motion centric machine application development	
Homing 	<ul style="list-style-type: none"> ■ Supported homing modes: <ul style="list-style-type: none"> - Touchprobe input - Digital signal - Hardware limit switch - Torque - Move to absolute position - Set axis position - Set encoder position - Set axis and encoder position - Restore axis position from retain - Restore axis position from axis encoder - Write axis encoder and set axis position <p><i>Available as AFB (Application Function Block) and included in the Axis Module.</i></p>
Positioning 	<ul style="list-style-type: none"> ■ Endless feed, jogging, positioning ■ Motion profile with defined velocity, acceleration, deceleration, and jerk limit ■ Positioning modes: endless, relative, absolute <p><i>Available as AFB (Application Function Block) and included in the Axis Module.</i></p>
Cam motion 	<ul style="list-style-type: none"> ■ Graphical cam diagram editor and direct access to cam segment data through data structures ■ An axis in cam mode can follow any position source as its master, including other axes and encoders ■ Cam segment types: <ul style="list-style-type: none"> - straight - general 5th degree polynomial - simple sinus - inclined sinus - modified sinus - modified acceleration trapezoid - standard 5th degree polynomial - quadratic parabola - general modified sinusoid - general modified acceleration trapezoid - harmonic combination - sinus-straight combination - user-defined cam profile ■ Different cold start and warm start modes ■ Active cam diagram can be changed on the fly <p><i>Available as AFB (Application Function Block) and included in the Axis Module.</i></p>
Intelligent line shaft 	<ul style="list-style-type: none"> ■ Dynamically reduce the speed of the master axis according to the speed and acceleration limitations of the slave axes <ul style="list-style-type: none"> - achieve higher overall machine speed - increase machine lifetime - limit forces that act on the product ■ Multiple independent intelligent line shafts in one machine are possible <p><i>Available as AFB (Application Function Block) and included in the Axis Module.</i></p>
Software motion generator (SMG) 	<ul style="list-style-type: none"> ■ Overlay motion profiles of different types and with different masters (up to 3 position channels, resulting position profile is the sum of the component channels) ■ Additional motion laws (e.g. 7th degree polynomial) ■ Custom motion laws, implemented by the user (e.g. 11th degree polynomial) <p><i>Available as AFB (Application Function Block) that can be connected to the Axis Module.</i></p>
Multi-belt 	<ul style="list-style-type: none"> ■ For dual-belt and multi-belt applications, e.g. for grouping or infeed: <ul style="list-style-type: none"> - up to 8 belts - up to 8 stations - multiple trains per belt - up to 127 compartments per train - almost all parameters can be adjusted while the system is running - sensor signal filtering - collision prevention - warm start <p><i>Available as AFB (Application Function Block) and EM (Equipment Module), usage requires runtime license points, see page 7 for details.</i></p>
Smart infeed 	<ul style="list-style-type: none"> ■ Basis for rapid development of various product feed applications with 1 to 10 belts in series <p><i>Available as AFB (Application Function Block) and EM (Equipment Module), usage requires runtime license points, see page 7 for details.</i></p>

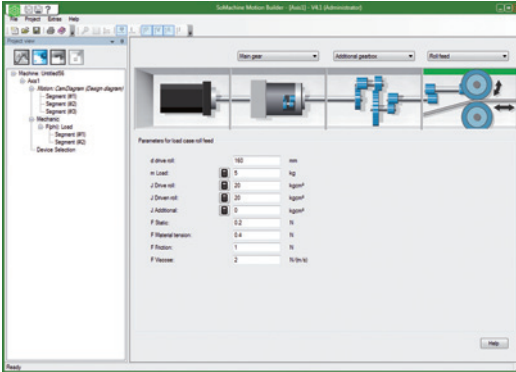
General characteristics	
Feature	Description
Motion centric machine application development (continued)	
Unwinder 	<ul style="list-style-type: none"> For winding and unwinding foils, with or without a dancer roll <p>Available as AFB (Application Function Block) and EM (Equipment Module), currently available only as "obsolete" library conforming to the PacDrive M programming conventions. PacDrive 3 version planned.</p>
Crank 	<ul style="list-style-type: none"> Motion can be stated as the linear motion of the crank slide. This linear motion profile is transformed into a rotary motion profile of the crank shaft <p>Available as AFB (Application Function Block) and EM (Equipment Module).</p>
Robotics 	<ul style="list-style-type: none"> Supported kinematics: <ul style="list-style-type: none"> Portal/Cartesian robots 2-axis delta robots 3-axis delta robots Articulated robots SCARA robots Custom transformation for non-standard robots Additional axes possible (e.g. rotary axis) Additional wrist transformation possible Different interpolations: linear, circular, spline. Blending of segments possible Monitoring of work envelope (including obstacles) Synchronous belt tracking (synchronizing to a linear or rotary motion, in any spatial orientation) Acceleration limitation <p>Available as AFB (Application Function Block) and EM (Equipment Module), usage requires runtime license points, see page 7 for details. AFB currently available only as "obsolete" library conforming to the PacDrive M programming conventions. PacDrive 3 version planned.</p>
Torque control 	<ul style="list-style-type: none"> Move axes with torque control instead of position control <p>Available as AFB (Application Function Block).</p>
Current control 	<ul style="list-style-type: none"> Directly send acceleration reference values to the drive in every Sercos cycle, for applications in which direct control of drive current is desired <p>Available as a firmware feature.</p>
Print mark control 	<ul style="list-style-type: none"> Absolute correction for each individual product, or tendential correction of small deviations e.g. on a continuous foil feed Indexed mode or synchronized operation <p>Available as AFB (Application Function Block).</p>
PackML 	<ul style="list-style-type: none"> Optionally represent the machine state in conformance with the PackML standard (ISA-TR88.00.02-2008) <p>Currently available only as "obsolete" library conforming to the PacDrive M programming conventions. PacDrive 3 version planned.</p>
PLCopen MC 	<ul style="list-style-type: none"> As an alternative to PacDrive style motion control, FBs conforming to PLCopen MC are also available: <ul style="list-style-type: none"> Multi-axis <ul style="list-style-type: none"> MC_CamIn MC_CamOut MC_Cam_Id MC_Cam_Ref MC_GearIn MC_GearOut MC_PhasingAbsolute MC_StartMode Single-axis <ul style="list-style-type: none"> MC_Direction MC_Home MC_MoveAbsolute MC_MoveAdditive MC_MoveRelative MC_MoveVelocity MC_Stop

General characteristics

Feature	Description
---------	-------------

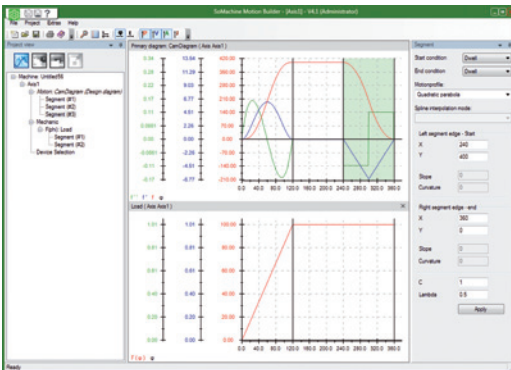
Motion Builder

Mechanical modeling



- Load cases:
 - Rotary table
 - Roll feed
 - Conveyor belt
 - Spindle drive
 - Rack and pinion gear
 - Crank
 - General load case
- Additional transformations:
 - Additional gearbox
 - Belt drive
 - Coupling
- In Logic Builder, mechanical drive parameters can be generated from the mechanical parameters:
 - FeedConstant
 - GearIn, GearOut
 - J_Gear
 - StaticFriction
 - ViscousFriction
 - J_Load (mechatronic data exchange)

Motion profile



- Cam diagram, with the following motion laws:
 - straight line
 - quadratic parabola
 - 5th degree polynomial
 - simple sinus
 - modified sinus
 - modified acceleration trapezoid
 - general 5th degree polynomial
 - user defined motion profile
- Positioning (planned)
- Multiple motion profiles per axis possible
- Synchronization of motion profiles with Logic Builder (mechatronic data exchange)
- Import (*.asc, *.trace, *.txt) and export (*.asc, *.dat) of motion profiles
- Dynamic load: M(phi) or F(phi) as a separate profile

Mechanical sizing

- Product database:
 - Drives
 - Motors (user-defined motors possible)
 - Gearboxes (user-defined gearboxes possible)
 - Reserve settings
 - Sizing results:
 - Velocity, acceleration, torque, inertia in different parts of the machine
 - $J_{load} : J_{motor}$
 - Torque over time
 - Torque over speed
 - Analysis of peak torque for different gearbox factors

Electrical sizing

- Power circuit calculation:
 - Calculation of current and power, depending upon actual motion profiles
 - Multiple power circuits possible, each with or without shared DC bus

Presentation

Product offer

SoMachine Motion software is delivered on a DVD as a fully-functional 21-day trial version. After the 21-day trial period, a license is required for continued use.

- SoMachine Motion is available in two languages: English, German
- Processor: Intel® Core™ 2 Duo or equivalent (recommended: Intel® Core™ i7 or equivalent)
- RAM Memory: 2 GB (recommended: 4 GB)
- Hard Disk: 6 GB (recommended: 10 GB)
- OS: Microsoft Windows 7 SP1, Microsoft Windows 8.1, Microsoft Windows 10
- Drive: DVD reader
- Display: 1280 × 1024 pixel resolution or higher
- Peripherals: mouse or compatible pointing device, USB interface, Ethernet Network interface
- Web Access: Web registration requires Internet access
- The documentation is supplied in electronic format: complete on-line help plus complementary documentation in pdf format.

References

SoMachine Motion software

Description	Reference		
	SoMachine Motion DVD (1)	License (2) / number (Type)	SoMachine Motion Service Disc
<ul style="list-style-type: none"> ■ A license is required to use the engineering tools (Central, Logic Builder, Motion Builder, Vijeo). ■ Without a license, the engineering tools can be used as a trial version for 21 days. ■ Maintenance tools (Diagnostics, Controller Assistant, Device Assistant) and other tools (Gateway, OPC server, etc.) included on the DVD do not require a separate license, and can be installed and used indefinitely even without a license. ■ In addition, these tools are as well available separately on the SoMachine Motion Service Disc. 	VSWETSQMM000430 + Trial V4.3 license (21 days)	SOMMACCZXSPAZZ / 1 (Single)	VSWETSQMMS00430 V4.3
		SOMMACCZXTPAZZ / 10 (Team)	–
		SOMMACCZXEPAZZ / 100 (Entity)	–
		SOMMACCZZEPBZZ /100 (Floating License)	–

License update from previous version

Software version type	Reference to update SoMachine Motion V4.1	
SoMachine Motion V4 Single update (1)	SOMMADCZXSPAZZ	Single license
SoMachine Motion V4 Entity update (100)	SOMMADCZXEPAZZ	Entity license

(1) The DVD is mandatory and delivered with a trial license.

(2) One of the 4 types of license is mandatory.

Presentation

Runtime licensed features and license points

Some features require license points in order to function fully. License points are checked when such features are run. The controller works normally as long as sufficient license points are available. If the features in use exceed the available license points, the features can be used in demo mode for only 6 hours. The following features require licenses:

Feature	License point cost
Smart Infeed	25 license points per instance
Multi-belt	60 license points per instance
Robotics (base functionality)	30 license points per instance (1)
Robotics (transformation)	25 license points per instance (1)
Robotics (wrist transformation)	25 license points per instance (1)
Robotics (acceleration limitation)	25 license points per instance (1)
Use of 3 rd party drives on Sercos 3 (SercDrive)	15 license points per drive

(1) To control a robot and qualify for free robotic support, the purchase of a robotic controller is required. The robotic controller comes pre-loaded with license points that can be used for robotic and other features.

Separate memory cards with pre-loaded license points are also available. These are intended as spare parts or replacement parts for robotic controllers. License points are linked to a controller's memory card. License points cannot be returned or transferred. Additional license points can be purchased separately and added to existing memory cards (either robotics or regular). License points purchased separately are linked to a specific memory card during the purchasing process.

References

License points without flash card

Delivered as activation code only. These can be added to a flash card without license points, or can be used to add more license points to a flash card that already contains license points (see below).

Number of license points	Reference
License points without flash card	
1	VSWRTPT00100000
160	VSWRTPT16000000
240	VSWRTPT24000000
320	VSWRTPT32000000

Flash card with license points included, for use with PacDrive LMC controllers for non-robotic applications

These flash cards come pre-loaded with a number of license points and replace the flash card that comes with the controller, thus eliminating the need to activate license points.

Number of license points	Reference					
	SD-card with license points					
	For LMC Eco controller	Capacity				
		Compact flash card with license points				
		For LMC Pro controller	Capacity			
		For LMC Pro2 controller	Capacity			
0 (1)	VW3E70360AA00	512 MB	VW3E70340AA00 VW3E70350AA00	128 MB 512 MB	VW3E7038000000 VW3E7037000000	128 MB 512 MB
10	–	–	–	–	VW3E7037000100	512 MB
20	–	–	–	–	VW3E7037000200	512 MB
30	–	–	VW3E70351AA00	512 MB	–	–
40	–	–	VW3E70352AA00	512 MB	VW3E7037000400	512 MB
55	–	–	VW3E70353AA00	512 MB	–	–
60	–	–	VW3E70354AA00	512 MB	–	–
80	–	–	VW3E70355AA00	512 MB	VW3E7037000800	512 MB
105	–	–	VW3E70356AA00	512 MB	–	–
160	–	–	VW3E70357AA00	512 MB	VW3E7037001000	512 MB
240	–	–	VW3E70358AA00	512 MB	–	–
320	–	–	VW3E70359AA00	512 MB	VW3E7037002000	512 MB
330	–	–	VW3E7035AAA00	512 MB	–	–
420	–	–	VW3E7035BAA00	512 MB	–	–
465	–	–	VW3E7035CAA00	512 MB	–	–
999	–	–	VW3E7035DAA00	512 MB	–	–

(1) References of spare parts (Flash card supplied with the controller).

Flash cards with license points: spare parts for robot controllers

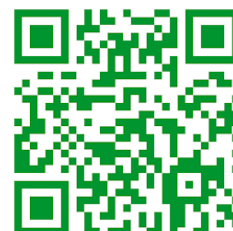
Number of license points	Reference			
	SD-card with license points			
	Spare part for LMC Eco Robot controller (1)	Capacity		
		Compact flash card with license points		
		Spare part for LMC Pro Robot controller (1)	Capacity	
80	VW3E70365AARC	512 MB	VW3E70355AARC	512 MB
160	VW3E70367AARC	512 MB	VW3E70357AARC	512 MB
240	–	–	VW3E70358AARC	512 MB
320	–	–	VW3E70359AARC	512 MB
999	–	–	VW3E7035DAARC	512 MB

(1) Robot controllers already come with a memory card with the necessary license points included. Please refer to our catalog "PacDrive 3 Automation Solution, PacDrive Delta robots".

S	
SOMMACCZXEPAZZ	6
SOMMACCZXSPAZZ	6
SOMMACCZXTPAZZ	6
SOMMACCZZEPBZZ	6
SOMMADCZXEPAZZ	6
SOMMADCZXSPAZZ	6

V	
VSWETSQMM000430	6
VSWETSQMMS00430	6
VSWRTPT00100000	7
VSWRTPT16000000	7
VSWRTPT24000000	7
VSWRTPT32000000	7
VW3E7035AAA00	7
VW3E7035BAA00	7
VW3E7035CAA00	7
VW3E7035DAA00	7
VW3E7035DAARC	7
VW3E70340AA00	7
VW3E70350AA00	7
VW3E70351AA00	7
VW3E70352AA00	7
VW3E70353AA00	7
VW3E70354AA00	7
VW3E70355AA00	7
VW3E70355AARC	7
VW3E70356AA00	7
VW3E70357AA00	7
VW3E70357AARC	7
VW3E70358AA00	7
VW3E70358AARC	7
VW3E70359AA00	7
VW3E70359AARC	7
VW3E70360AA00	7
VW3E70365AARC	7
VW3E70367AARC	7
VW3E7037000000	7
VW3E7037000100	7
VW3E7037000200	7
VW3E7037000400	7
VW3E7037000800	7
VW3E7037001000	7
VW3E7037002000	7
VW3E7038000000	7

The Next Generation



Schneider Electric Industries SAS

Head Office
35, rue Joseph Monier
F-92500 Rueil-Malmaison
France

The information provided in this documentation contains general descriptions and/or technical characteristics of the performance of the products contained herein. This documentation is not intended as a substitute for and is not to be used for determining suitability or reliability of these products for specific user applications. It is the duty of any such user or integrator to perform the appropriate and complete risk analysis, evaluation and testing of the products with respect to the relevant specific application or use thereof. Neither Schneider Electric nor any of its affiliates or subsidiaries shall be responsible or liable for misuse of the information contained herein.

Design: Schneider Electric
Photos: Schneider Electric

www.schneider-electric.com/msx